

David Broadway Salon

6511 W Central Ave, Toledo, OH 43617

Lucas County



HIGHLIGHTS

For Lease
County: Lucas
Type: Office
Total SF: 10,304
Year Built: 1986
Year Renovated: 2000
Market: Toledo

This unique and beautiful campus sits just off the US-23/I-75 interchange and boasts of over 10,500 square feet of gross leasable area on 2 acres. Other amenities include ample parking and access to a fully signalized light. It may be hard to find better prime commercial real estate along the Central Avenue corridor which carries over 31,000 vehicles per day, and yet it sits perfectly a secluded park like setting.

CONTACT

Aaron J Wiens
419-843-6265
awiens@tolsonent.com

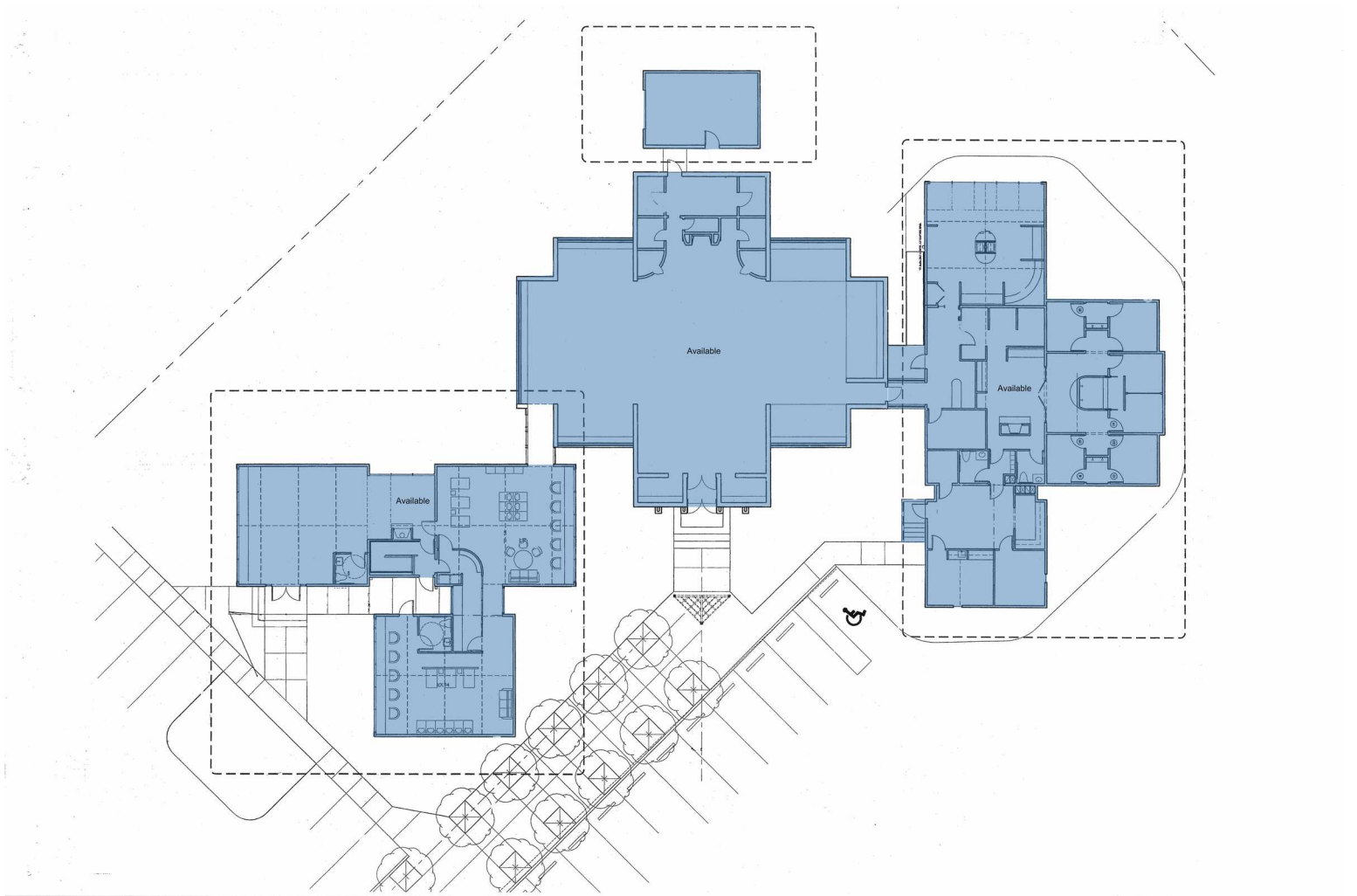
DEMOGRAPHICS

	1 MILE	3 MILES	5 MILES
Population	8,496	58,440	154,499
Households	3,432	24,743	64,324
Average Household Income (\$)	75,777	81,645	70,802
Median Household Income (\$)	60,602	56,578	50,501

David Broadway Salon

6511 W Central Ave, Toledo, OH 43617

Lucas County



1 Available 4,515 SF

2 Available 3,301 SF

3 Available 2,693 SF